



INSTALLATION GUIDE

Mishimoto Tow Hooks

SKU: MMTH-XXX-XX

TABLE OF CONTENTS

- Pg 1** RESOURCES AND CONTACT INFORMATION
- Pg 2** IMPORTANT SAFETY INFORMATION
 - SUPPLIED PARTS
 - REQUIRED TOOLS
 - INSTALLATION INSTRUCTIONS
- Pg 3** DISPOSAL INSTRUCTIONS
 - WARRANTY INFORMATION

RESOURCES & CONTACT



CALL 1-877-GOMISHI

CUSTOMER SERVICE HOURS: MON-FRI 8:30AM-5:00PM EST



MISHIMOTO



GOMISHIMOTO



MISHIMOTO



WEBSITE

WWW.MISHIMOTO.COM



ENGINEERING BLOG

WWW.MISHIMOTO.COM/ENGINEERING

IMPORTANT SAFETY INFORMATION

- Mishimoto recommends you use safety glasses and protective gloves during the installation of our products
- Raise vehicle only on jack stands or on a vehicle lift
- Allow vehicle to cool completely prior to attempting installation
- Do not run the engine or drive the vehicle while overheating; serious damage can occur
- Please dispose of any liquids properly
- Mishimoto is not responsible for any vehicle damage or personal injury due to installation errors, misuse, or removal of Mishimoto products
- If you need any assistance while installing our products, reach out to our Customer Service Team at 1-877-GOMISHI

REQUIRED TOOLS

- PLASTIC TRIM TOOL
- 19MM SOCKET
- 3/8" RATCHET WRENCH
- 8MM ALLEN KEY
- 25MM OR ADJUSTABLE WRENCH
- MARKER OR CENTER PUNCH (OPTIONAL)
- PAINTER'S TAPE (OPTIONAL)
- DRILL (OPTIONAL)
- STEP DRILL BIT (1" MAX SIZE OR LARGER) (OPTIONAL)
- BUBBLE LEVEL (OPTIONAL)
- PENETRATING LUBRICANT (OPTIONAL)

INSTALLATION INSTRUCTIONS

- 01.** Locate tow hook cover and remove using a plastic trim tool (if necessary).



- 02.** (OPTIONAL) Clean the threads of the tow hook receiver on the vehicle using penetrating lubricant to make sure that the tow hook threads in smoothly.

- 03.** Insert the tow hook shaft into the vehicle bumper/core support and tighten with a 19mm wrench. Tighten to approximately 15 ft-lbs. Do NOT overtighten.



- 04.** If you do NOT plan on cutting the tow hook cover to fit over the tow hook, skip to step 9.

- 05.** Put one piece of painter's tape vertically on each side of the hook. Make sure that each piece of tape extends above and below the tow hook cover.

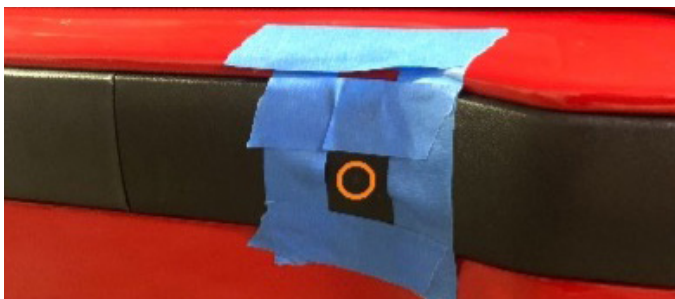


- 06.** Put one piece of painter's tape horizontally above and below the tow hook. Put a final piece of tape horizontally on top to keep the tape together. Remove the tow hook shaft with 19mm wrench. (View top left image on next page)

Continued on next page



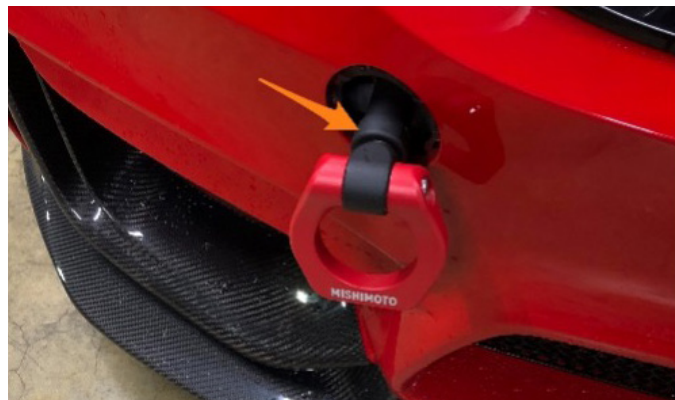
07. Raise the tape assembly (do not remove) and reinstall the tow hook cover using the top piece of tape as a “hinge”. Place the tape back in its original position but over the tow hook cover. Mark the center of the square where the center of the tow hook shaft was located with a marker or center punch. (View top right image)



08. Remove the tow hook cover and drill where marked in step 7 to approximately 1”. Reinstall tow hook cover and test fitment of tow hook shaft. It may be necessary to enlarge the hole slightly. Tighten tow hook shaft.

09. Loosen the 8mm socket head cap screw on the tow hook assembly so that the tow hook can swing without resistance. Thread the tow hook assembly into the tow shaft. Make sure that the tow hook is not touching the bumper and there is enough room to install a tow strap if necessary. Be aware that each side of the tow hook has different logos. Ensure that the desired logo is facing outward.

10. Using a 25mm or 1” wrench, tighten the lock nut until the tow hook assembly can no longer spin freely. Using a bubble level, make sure that the tow hook assembly is level to the ground. Realign the tow hook if necessary.



11. Tighten socket head cap screw securing the tow hook in desired position.



Congratulations! You have completed your installation.

DISPOSAL INSTRUCTIONS

- › Do not dispose of any product as unsorted municipal waste. Use separate collection facilities. Contact your local authority for information regarding the collection systems available.
- › Never improperly dispose of any coolant, oil, or other chemicals.

WARRANTY INFORMATION



- › All claims must be accompanied with a picture of the Mishimoto product showing the issue for which the claim is being submitted.
- › Mishimoto asks that the customer inspect their purchased item for any damage immediately upon arrival.
- › Any product deemed dead on arrival (DOA) must be claimed within 14 business days of delivery. Claims outside of this time frame will not be covered under the Mishimoto Lifetime Warranty.
- › This warranty does not include payment and/or reimbursement of the cost of labor in connection with the removal of any product returned pursuant to the warranty policy or in connection with the installation of any replacement items provided under the warranty policy.
- › Mishimoto has the right to refuse a claim at any time.

- › When Mishimoto accepts a claim, Mishimoto retains full discretion to choose if it will: (i) repair or replace purchaser's original Mishimoto product; (ii) replace purchaser's original Mishimoto product with the most current available model; or (iii) provide the purchaser with a gift card redeemable on [Mishimoto.com](https://www.mishimoto.com) in the amount of the original purchase price of the original Mishimoto product. The provision of a replacement of a Mishimoto product is subject to availability and Mishimoto retains the right to substitute any warranty claim item with a comparable item or credit at any time.
- › If Mishimoto determines that it will provide a replacement item in connection with a claim under this warranty policy, and such item is out of stock, Mishimoto will place the customer on backorder and ship the replacement product to the purchaser once it becomes available.
- › Mishimoto is not liable for incorrect shipments in connection with a claim if a claim form is completed incorrectly, or if a model number is not included in a claim.
- › If you have a vehicle equipped with an automatic transmission, please make sure to specify this within the text box on the claim form. Mishimoto is not responsible for incorrect replacement shipments if transmission type is not indicated.



WARNING
Cancer and
Reproductive Harm
www.P65Warnings.ca.gov

This product can expose you to chemicals which are known to the state of California to cause cancer. For more information visit: www.p65warnings.ca.gov