



2-INCH REAR LEVELING KIT

2007-2019 CHEVY/GMC SILVERADO/SIERRA 1500

INSTALLATION GUIDE

PARTS INCLUDED

2PC 2-inch Steel Spacer Blocks

4PC U-Bolts

8PC Flat Washers

8 PC Hex Nuts

INSTALL TIME

2

DIFFICULTY

2/5

REQUIRED TOOLS

Wheel Chocks

Floor Jack

Jack Stands

Pick Tool

13mm Wrench

21mm Wrench

1/4"-Drive Ratchet

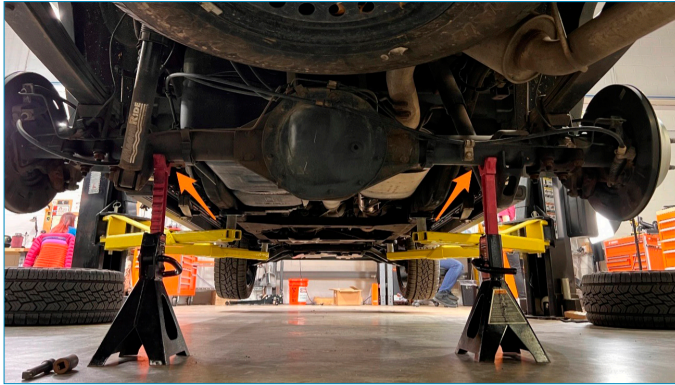
1/2"-Drive Ratchet

13mm Deep Socket

21mm Deep Socket

INSTRUCTIONS

01. Place wheel chocks on both sides of at least one front wheel. Loosen rear wheel bolts. Jack up the rear of the truck and place jack stands under the rear axle. Remove the rear wheels.



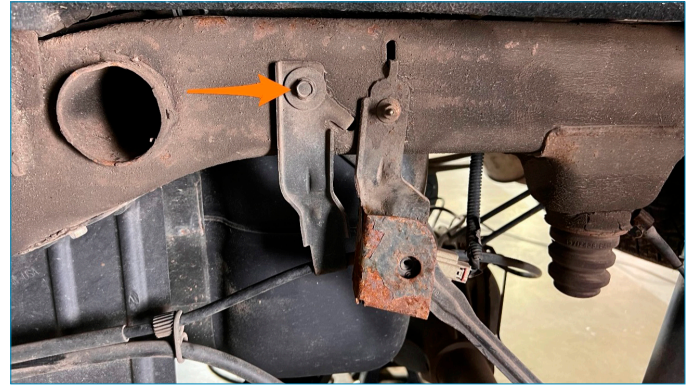
02. Use a pick tool to remove the ABS sensor pigtail on the passenger side.



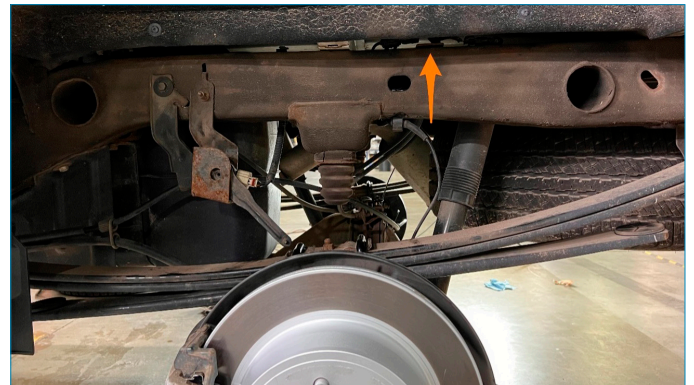
03. Use a pick tool to remove the ride height sensor pigtail on the driver's side.



04. Using a 13mm socket, remove the bolt for the parking brake cable bracket on the driver's side and let the bracket hang free.



05. Using a 13mm wrench, remove the two bolts for the upper brake line bracket. These are on top of the frame rail on the driver's side.



06. Using a 13mm socket, remove the bolt for the brake line bracket on top of the differential housing.



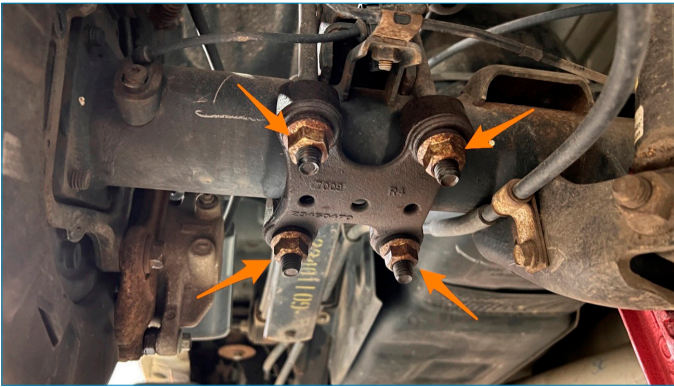
The following steps outline installation on one side of the vehicle.

CONTINUED ON FOLLOWING PAGE

07. Using a 21mm socket and wrench, remove the lower shock bolt and nut.



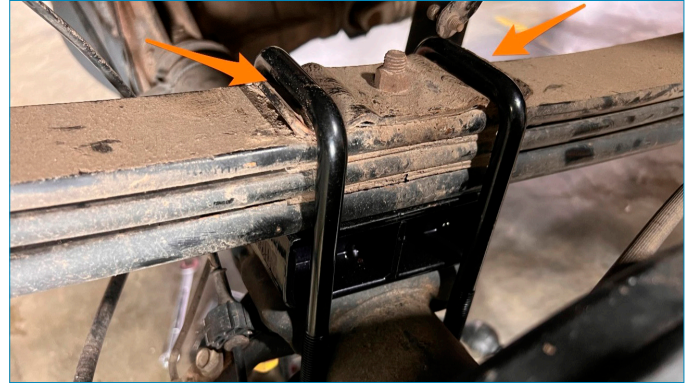
08. Using a 21mm deep socket, remove the 4 U-bolt nuts, U-bolts, and support bracket.



09. Using the floor jack, raise the frame of the truck on the side you're working on until you can remove the factory spacer block between the spring and the axle. Install the 2-inch spacer in its place, then carefully lower the truck back down onto the axle being sure the alignment pins on the spring/spacer fall in the corresponding holes.

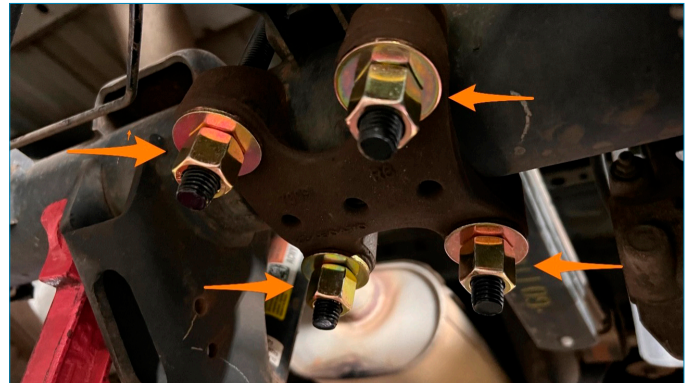


10. Install the supplied longer U-bolts over the leaf spring, ensuring they sit in the bracket as shown. The U-bolts should not be directly contacting the leaf springs.



11. Using the supplied nuts and washers, install the lower support bracket and tighten using a 21mm deep socket to factory torque specifications.

Note: To prevent damaging the U-bolts, all the nuts should be tightened incrementally, in sequence. **DO NOT** fully tighten one nut, then move on to the next. There should be roughly the same distance of threads protruding above each nut, so the bracket is perpendicular to the U-bolts.



12. Reinstall the lower shock bolt and repeat steps 7–12 on the other side.

13. Torque all fasteners to manufacturer's recommended specifications.

14. Reinstall all cable/line brackets and secure the wires again with the clips.

15. Reinstall the rear wheels, lower the truck, and torque the wheel bolts.

RESOURCES & CONTACT INFORMATION



CALL 1-877-GOMISHI

CUSTOMER SERVICE HOURS: MON-FRI 8:30AM-5:00PM EST



MISHIMOTO



GOMISHIMOTO



MISHIMOTO



WEBSITE

WWW.MISHIMOTO.COM



ENGINEERING BLOG

WWW.MISHIMOTO.COM/ENGINEERING