

# INSTALLATION GUIDE

## Aluminum Radiator Fits 2021+ Ford Bronco

SKU: MMRAD-BR-21

### TABLE OF CONTENTS

- Pg 1** RESOURCES AND CONTACT INFORMATION
- Pg 2** IMPORTANT SAFETY INFORMATION
  - REQUIRED TOOLS
  - INSTALLATION INSTRUCTIONS
- Pg 3** DISPOSAL INSTRUCTIONS
  - WARRANTY INFORMATION

### RESOURCES & CONTACT

-  **CALL 1-877-GOMISHI**  
CUSTOMER SERVICE HOURS: MON-FRI 8:30AM-5:00PM EST
-  **MISHIMOTO**
-  **GOMISHIMOTO**
-  **MISHIMOTO**
-  **WEBSITE**  
[WWW.MISHIMOTO.COM](http://WWW.MISHIMOTO.COM)
-  **ENGINEERING BLOG**  
[WWW.MISHIMOTO.COM/ENGINEERING](http://WWW.MISHIMOTO.COM/ENGINEERING)

## IMPORTANT SAFETY INFORMATION

- › Mishimoto recommends you use safety glasses and protective gloves during the installation of our products
- › Raise vehicle only on jack stands or on a vehicle lift
- › Allow vehicle to cool completely prior to attempting installation
- › Do not run the engine or drive the vehicle while overheating; serious damage can occur
- › Please dispose of any liquids properly
- › Mishimoto is not responsible for any vehicle damage or personal injury due to installation errors, misuse, or removal of Mishimoto products
- › If you need any assistance while installing our products, reach out to our Customer Service Team at 1-877-GOMISHI

## SUPPLIED PARTS

MISHIMOTO RADIATOR  
 (4X) M4 SCREWS  
 (2X) A/C CONDENSER  
 MOUNTING PLATES  
 (1X) FOAM STRIP

## REQUIRED TOOLS

TRIM CLIP TOOL	1/4" RATCHET
CHANNEL LOCK PLIERS	PICK TOOL
8MM SOCKET	2.5MM ALLEN WRENCH
10MM SOCKET	CONTAINER TO DRAIN COOLANT
13MM SOCKET	

**INSTALL TIME: 4 HOURS**

**INSTALL DIFFICULTY:** 

## INSTALLATION INSTRUCTIONS

1. Remove front grill and lower trim piece to gain access to radiator drain valve.
2. Remove coolant expansion tank cap and drain coolant.

3. Remove stock radiator from vehicle.

4. Install the provided foam strip onto the top of the Mishimoto radiator as shown.

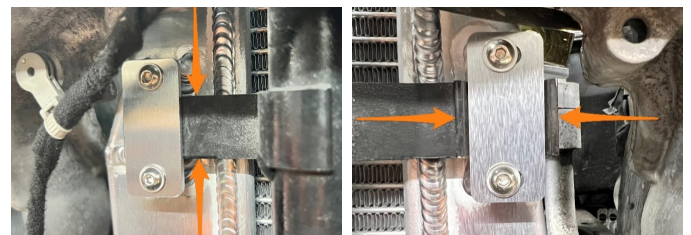


5. Ensure that the radiator drain bolt is tight before installing.



6. Install the Mishimoto radiator in the vehicle.

7. Secure the A/C condenser to the Mishimoto radiator using the provided M4 screws and A/C condenser mounting plates, ensuring the tab is centered in the slot on the radiator before tightening.



8. Reassemble the vehicle and refill the cooling system per manufacturer's instructions. The Mishimoto radiator adds 0.4L to the cooling system capacity.

9. Bring the vehicle up to operating temperature and check for leaks. Check coolant level in the expansion tank. Add coolant as necessary.

**Congratulations! You have finished your installation.**

## DISPOSAL INSTRUCTIONS

- › Do not dispose of any product as unsorted municipal waste. Use separate collection facilities. Contact your local authority for information regarding the collection systems available.
- › Never improperly dispose of any coolant, oil, or other chemicals.

## WARRANTY INFORMATION



- › All claims must be accompanied with a picture of the Mishimoto product showing the issue for which the claim is being submitted.
- › Mishimoto asks that the customer inspect their purchased item for any damage immediately upon arrival.
- › Any product deemed dead on arrival (DOA) must be claimed within 14 business days of delivery. Claims outside of this time frame will not be covered under the Mishimoto Lifetime Warranty.
- › This warranty does not include payment and/or reimbursement of the cost of labor in connection with the removal of any product returned pursuant to the warranty policy or in connection with the installation of any replacement items provided under the warranty policy.
- › Mishimoto has the right to refuse a claim at any time.

- › When Mishimoto accepts a claim, Mishimoto retains full discretion to choose if it will: (i) repair or replace purchaser's original Mishimoto product; (ii) replace purchaser's original Mishimoto product with the most current available model; or (iii) provide the purchaser with a gift card redeemable on [Mishimoto.com](https://www.mishimoto.com) in the amount of the original purchase price of the original Mishimoto product. The provision of a replacement of a Mishimoto product is subject to availability and Mishimoto retains the right to substitute any warranty claim item with a comparable item or credit at any time.
- › If Mishimoto determines that it will provide a replacement item in connection with a claim under this warranty policy, and such item is out of stock, Mishimoto will place the customer on backorder and ship the replacement product to the purchaser once it becomes available.
- › Mishimoto is not liable for incorrect shipments in connection with a claim if a claim form is completed incorrectly, or if a model number is not included in a claim.
- › If you have a vehicle equipped with an automatic transmission, please make sure to specify this within the text box on the claim form. Mishimoto is not responsible for incorrect replacement shipments if transmission type is not indicated.



**WARNING**  
Cancer and  
Reproductive Harm  
[www.P65Warnings.ca.gov](https://www.P65Warnings.ca.gov)

This product can expose you to chemicals which are known to the state of California to cause cancer. For more information visit: [www.p65warnings.ca.gov](https://www.p65warnings.ca.gov)