



INSTALLATION GUIDE

**BAFFLED OIL CATCH CAN SYSTEM, FITS FORD
BRONCO 2.7L 2023+ | SKU: MMBCC-BR27-23S**

TABLE OF CONTENTS

Pg 01 RESOURCES & CONTACT INFORMATION

Pg 02 IMPORTANT SAFETY INFORMATION

TOOLS NEEDED

INSTALLATION TIME

INSTALLATION DIFFICULTY

INSTALLATION INSTRUCTIONS

Pg 04 DISPOSAL INSTRUCTIONS

WARRANTY INFORMATION

RESOURCES & CONTACT



CALL 1-877-GOMISHI

CUSTOMER SERVICE HOURS: MON-FRI 8:30AM-5:00PM EST



MISHIMOTO



GOMISHIMOTO



MISHIMOTO



WEBSITE

WWW.MISHIMOTO.COM



ENGINEERING BLOG

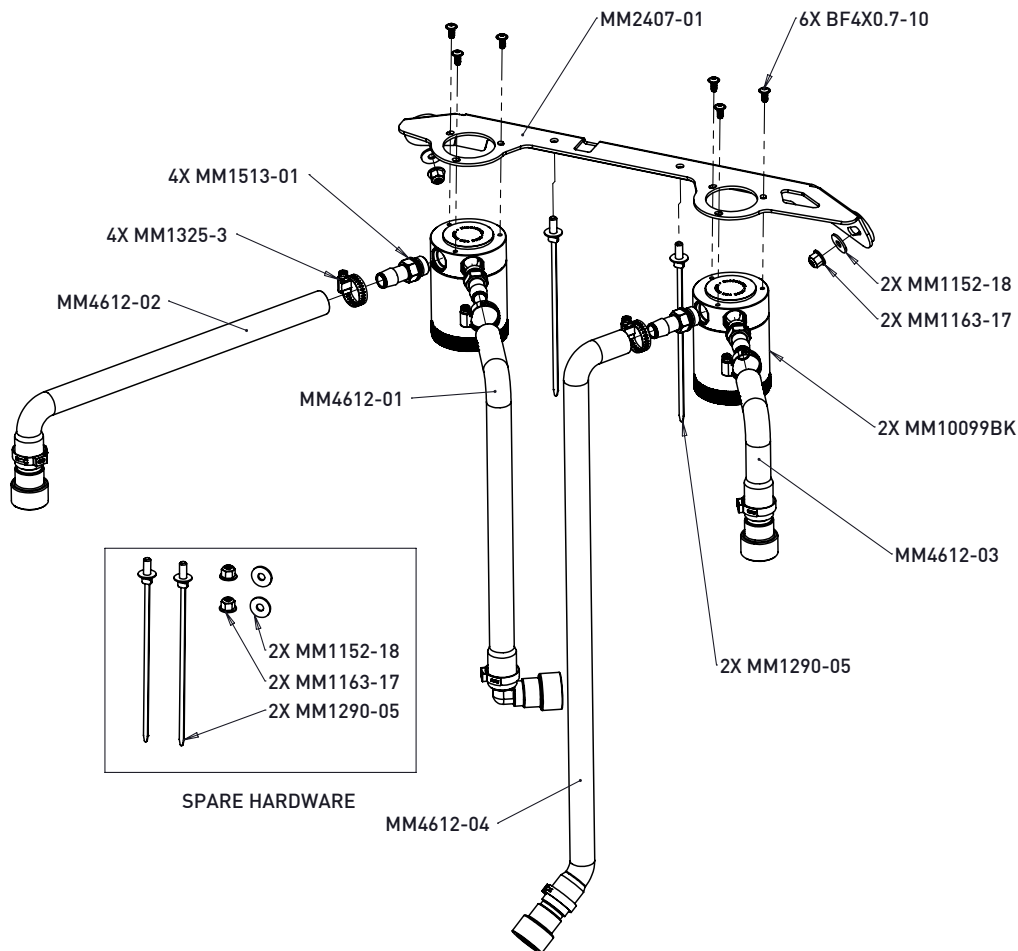
WWW.MISHIMOTO.COM/ENGINEERING

PARTS BREAKDOWN

PART NUMBER	DESCRIPTION	QTY
MM2407-01	BRACKET	1
MM10099BK	2-PORT COMPACT CATCH CAN- HIGH FLOW	2
MM1513-01	1/2" FITTING	4
BF4X0.7-10	M4 BUTTON HEAD FLANGED BOLT	6
MM1152-18	FLAT WASHER	4
MM1163-17	M6 FLANGED LOCKING NUT	4

PARTS BREAKDOWN

PART NUMBER	DESCRIPTION	QTY
MM1290-05	TREE CLIP ZIP TIE	4
MM4612-01	HOSE ASSEMBLY 1	1
MM4612-02	HOSE ASSEMBLY 2	1
MM4612-03	HOSE ASSEMBLY 3	1
MM4612-04	HOSE ASSEMBLY 4	1
MM1325-3	16-25MM WORM GEAR CLAMP	4



IMPORTANT SAFETY INFORMATION

- Mishimoto recommends you use safety glasses and protective gloves during the install of their products
- Raise vehicle only on jack stands or on a vehicle lift
- Allow vehicle to cool completely prior to attempting installation
- Do not run the engine or drive the vehicle while overheating; serious damage can occur
- Please dispose of any liquids properly
- Mishimoto is not responsible for any vehicle damage or personal injury due to installation errors, misuse, or removal of Mishimoto products
- If you need any assistance while installing our products, reach out to our Customer Service Team at 1-877-GOMISHI

INSTALLATION TIME 1 HOUR

INSTALLATION DIFFICULTY     

TOOLS NEEDED

1/4" DRIVE RATCHET AND
EXTENSIONS

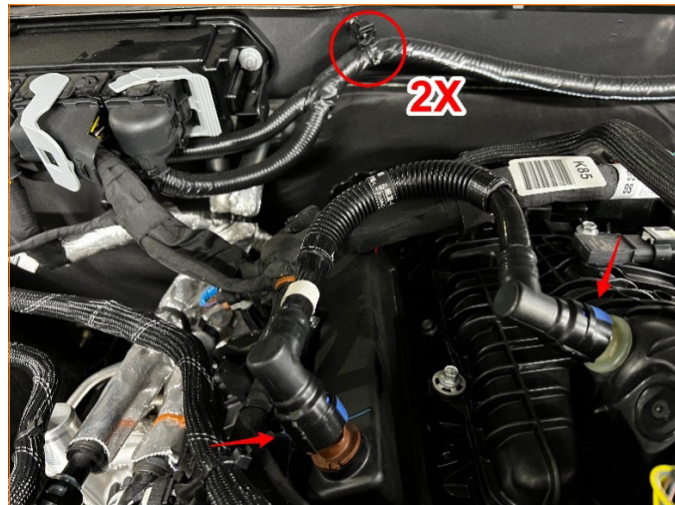
PICK TOOL

7MM AND 10MM SOCKETS

2.5MM ALLEN KEY

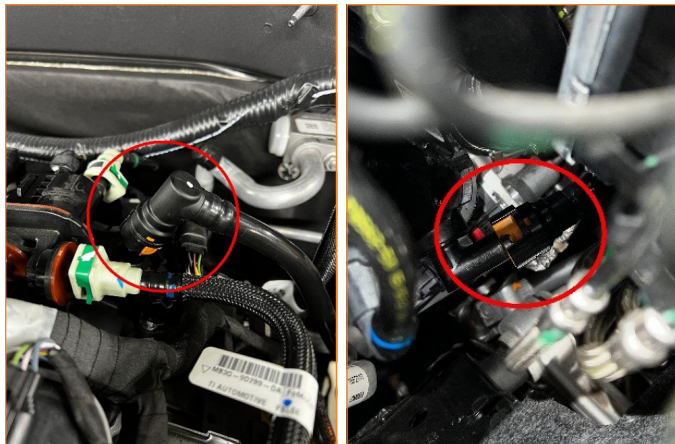
INSTALLATION INSTRUCTIONS

01. Remove the PCV hose with blue tabs. Lift the tab up and toward the center of the fitting to disengage the barb. Next, cut the zip ties securing the harness to the two firewall studs.

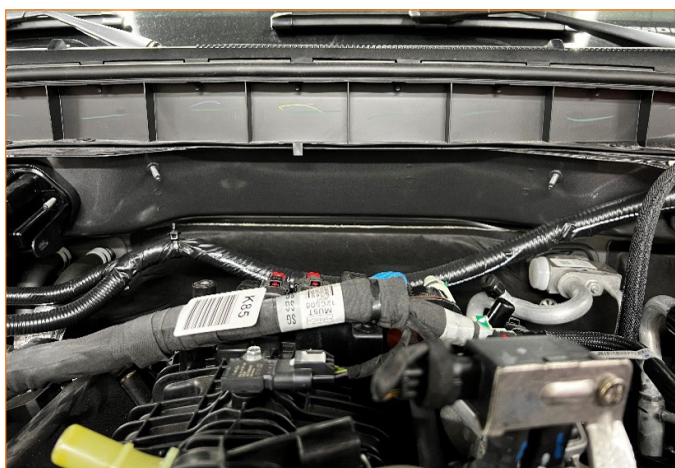


02. Remove the CCV side hose. This is the rigid plastic line with orange tabs on the fitting. To remove the fittings, use a pick tool underneath the orange tab and depress the 3x barbs while pulling the fitting away to disengage them. These fittings are designed to be tamper-proof and may be difficult to remove. Alternatively, remove the CCV breather fitting from the intake manifold, and the section of the intake tube to the CCV hose is attached to, then the assembly can be removed from the vehicle for better access to the fitting barbs.

CONTINUED ON FOLLOWING PAGE



03. Remove the plastic caps and expose the two M6 studs for mounting the catch can bracket.



04. Install the catch can bracket to the firewall studs and fasten using 2x M6 locking nuts and washers.

05. Assemble the catch can with fittings to the bracket in the orientation shown.

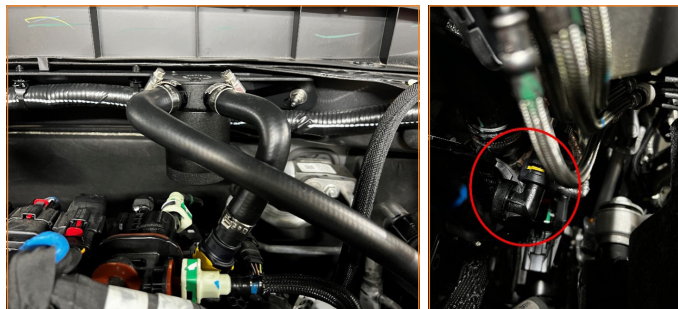
06. Secure the wire harness to the bracket with provided tree clip zip ties.



07. Attach PCV-side catch can hoses as shown and secure with provided worm gear clamps. Push down on the fittings to engage the barb, then push in the yellow locking tab.



08. Attach CCV-side catch can hoses as shown and secure with provided worm gear clamps.



Congratulations! You have finished your installation.

DISPOSAL INSTRUCTIONS

- › Do not dispose of any product as unsorted municipal waste. Use separate collection facilities. Contact your local authority for information regarding the collection systems available.
- › Never improperly dispose of any coolant, oil, or other chemicals.

WARRANTY INFORMATION



- › All claims must be accompanied with a picture of the Mishimoto product showing the issue for which the claim is being submitted.
- › Mishimoto asks that the customer inspect their purchased item for any damage immediately upon arrival.
- › Any product deemed dead on arrival (DOA) must be claimed within 14 business days of delivery. Claims outside of this time frame will not be covered under the Mishimoto Lifetime Warranty.
- › This warranty does not include payment and/or reimbursement of the cost of labor in connection with the removal of any product returned pursuant to the warranty policy or in connection with the installation of any replacement items provided under the warranty policy.
- › Mishimoto has the right to refuse a claim at any time.
- › When Mishimoto accepts a claim, Mishimoto retains full discretion to choose if it will: (i) repair or replace purchaser's original Mishimoto product; (ii) replace purchaser's original Mishimoto product with the most current available model; or (iii) provide the purchaser with a gift card redeemable on [Mishimoto.com](https://www.mishimoto.com) in the amount of the original purchase price of the original Mishimoto product. The provision of a replacement of a Mishimoto product is subject to availability and Mishimoto retains the right to substitute any warranty claim item with a comparable item or credit at any time.

- › If Mishimoto determines that it will provide a replacement item in connection with a claim under this warranty policy, and such item is out of stock, Mishimoto will place the customer on backorder and ship the replacement product to the purchaser once it becomes available.
- › Mishimoto is not liable for incorrect shipments in connection with a claim if a claim form is completed incorrectly, or if a model number is not included in a claim.
- › If you have a vehicle equipped with an automatic transmission, please make sure to specify this within the text box on the claim form. Mishimoto is not responsible for incorrect replacement shipments if transmission type is not indicated.



WARNING
Cancer and
Reproductive Harm
www.P65Warnings.ca.gov

This product can expose you to chemicals which are known to the state of California to cause cancer. For more information visit: www.p65warnings.ca.gov