

# INSTALLATION GUIDE

Performance Aluminum Radiator, Fits 2024+ Ford Mustang V8/2.3L  
SKU: MMRAD-MUS-24

## TABLE OF CONTENTS

1. RESOURCES & CONTACT INFO
2. IMPORTANT SAFETY INFORMATION  
INSTALL TIME & DIFFICULTY  
REQUIRED TOOLS
9. DISPOSAL & WARRANTY INFORMATION

## RESOURCES & CONTACT



**CALL 1.877.466.4744**

CUSTOMER SERVICE HOURS: MON-FRI 8:30AM-5:00PM EST



**@MISHIMOTO**



**@GOMISHIMOTO**



**MISHIMOTO**



**@MISHIMOTO**



**ENGINEERING BLOG**

[WWW.MISHIMOTO.COM/ENGINEERING](http://WWW.MISHIMOTO.COM/ENGINEERING)

## PARTS BREAKDOWN

DESCRIPTION	QUANTITY
MISHIMOTO RADIATOR	1
M6 HEX HEAD FLANGED BOLTS	6
M6 WASHERS	6
M5 HEX HEAD	1
BRACKETS	2

## IMPORTANT SAFETY INFORMATION

- › Mishimoto recommends you use safety glasses and protective gloves during the installation of our products
- › Raise vehicle only on jack stands or on a vehicle lift
- › Allow vehicle to cool completely prior to attempting installation
- › Do not run the engine or drive the vehicle while overheating; serious damage can occur
- › Please dispose of any liquids properly
- › Mishimoto is not responsible for any vehicle damage or personal injury due to installation errors, misuse, or removal of Mishimoto products
- › If you need any assistance while installing our products, reach out to our Customer Service Team at 1-877-GOMISHI

## REQUIRED TOOLS

SOCKET DRIVER	10MM WRENCH
SOCKET EXTENSIONS	FLATHEAD SCREWDRIVER
SWIVEL SOCKET ADAPTER	<b>OPTIONAL TOOLS:</b>
7MM SOCKET	POP CLIP PLIERS
8MM SOCKET	TRIM REMOVAL TOOL
10MM SOCKET	

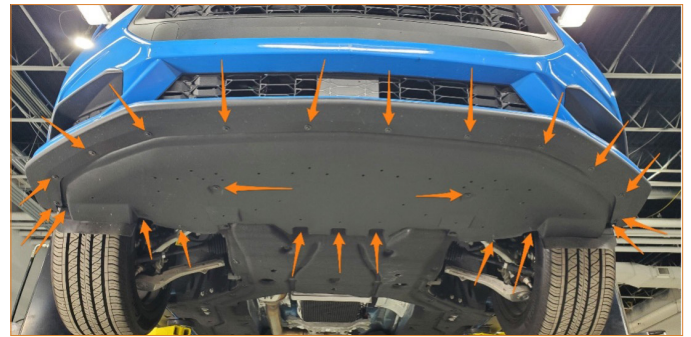
**INSTALL TIME: 2-3 HOURS**

**INSTALL DIFFICULTY:**     

## INSTALLATION INSTRUCTIONS

These instructions apply to both the V8 & 2.3L Mustangs. The photos shown may differ from your vehicle, depending on engine and trim level.

1. Using a 7mm socket and pop clip pliers or a flathead screwdriver, remove the twenty (20) bolts and three (3) pop clips from the engine splash guard and remove the splash guard from the vehicle.



2. Place a container under the radiator drain and loosen the plug to drain the coolant from the vehicle. A piece of hose can be attached to the spout on the drain to help direct the coolant into the container. Removing the cap from the expansion tank will allow the coolant to drain faster.



3. Using pop clip pliers or a flathead screwdriver, remove the eight (8) pop clips from the radiator cover and remove the cover from the vehicle.



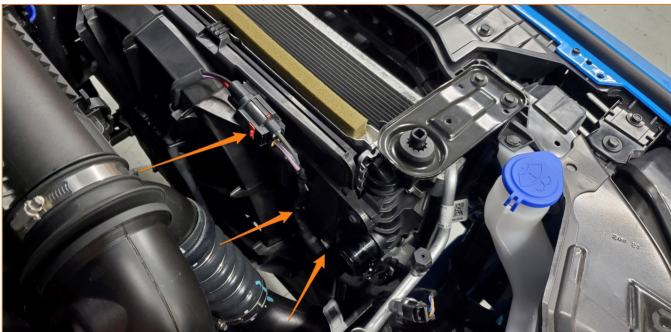
Continued on next page



4. Remove the hose clamps securing the inlet, outlet, and overflow hoses to the radiator and disconnect the hoses from the radiator.



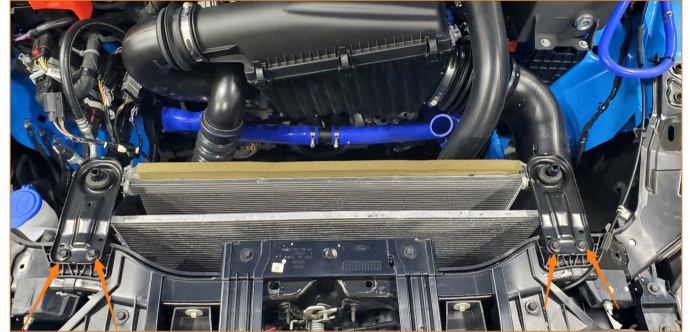
5. Disengage the red locking tab on the fan plug and disengage the plug. Then, remove the tree clips from the fan shroud to separate the wiring harness from the shroud.



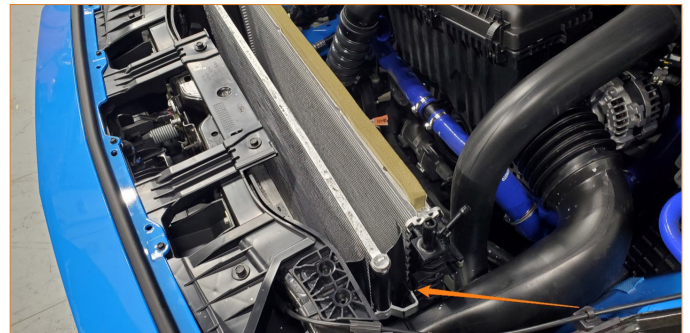
6. Using a 10mm socket, remove the two (2) bolts securing the fan shroud to the radiator.



7. Using a 10mm socket, remove the two (2) bolts from each of the upper radiator mounting brackets and remove the brackets from the vehicle.



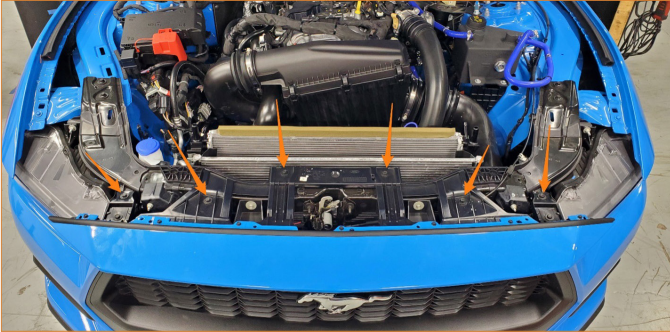
8. Using a 10mm wrench, remove the one (1) bolt securing the A/C condenser to the radiator. Then, disengage the plastic clip securing the tab on the other side of the A/C condenser and lift the condenser straight up to separate the tabs on the condenser from the hooks on the radiator. Depending on the vehicle trim level and options, additional coolers may be present. If so, separate them from the radiator the same way as the A/C condenser.



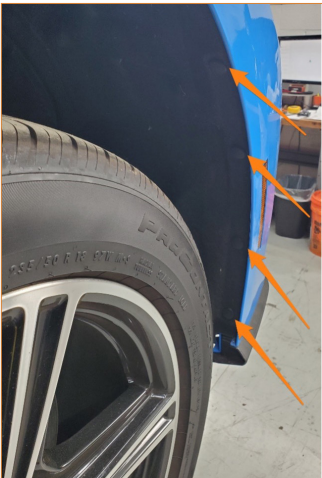
9. Steps 9-14 only apply to 2.3L vehicles. For V8 vehicles, skip to Step 15. Using a 10mm socket, remove the six (6) bolts on the top of the bumper.

Continued on next page

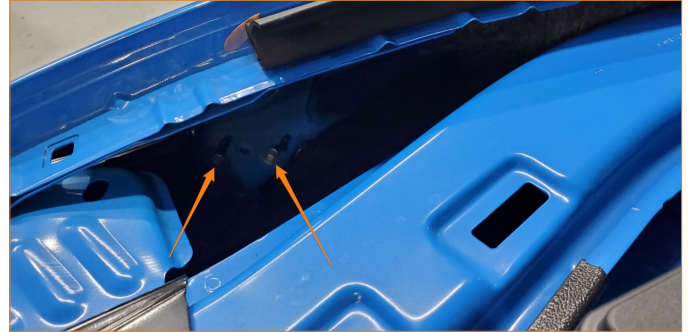
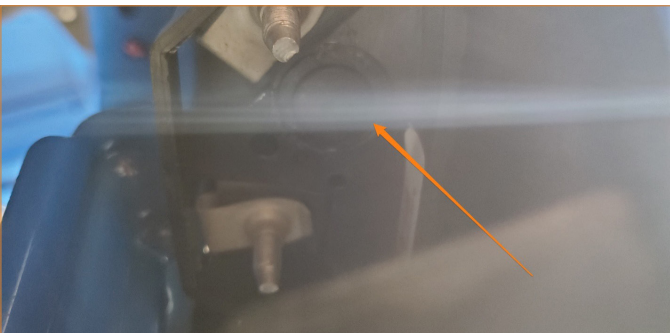




**10.** Using pop clip pliers or a flathead screwdriver, remove the four (4) pop clips securing the wheel liner to the bumper on each side of the vehicle.



**11.** Pull back the wheel liner to access the tree clip in the upper corner of the bumper and, using a flathead screwdriver, remove the tree clip from both sides of the vehicle. Using a 10mm socket, remove the two (2) bolts inside the fender that secure the bumper to the vehicle on both sides of the vehicle.



**12.** Unplug any wiring connections on the inside of the bumper (connections may vary depending on vehicle trim level and options). Then, remove the bumper from the vehicle.



Continued on next page



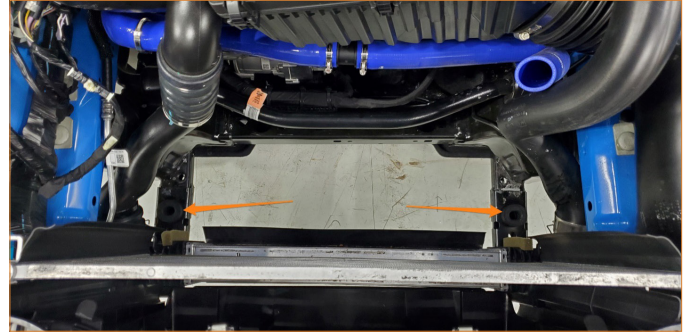
- 13.** Disengage the spring clips securing the charge pipes to the intercooler and disconnect the pipes from the intercooler.



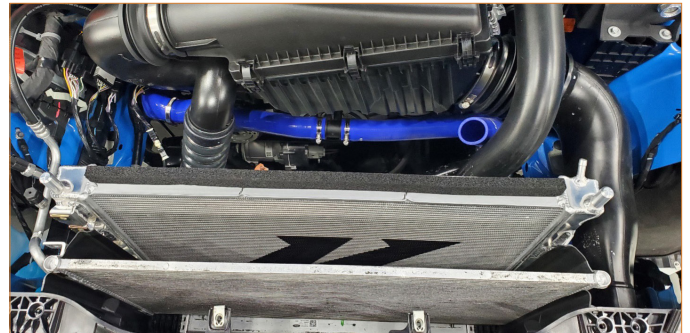
- 14.** Disengage the plastic clips securing the bottom of the intercooler from the radiator and tilt the bottom of the intercooler away from the radiator. Then, lift the intercooler upwards to separate the upper intercooler mounts from the hooks on the radiator.



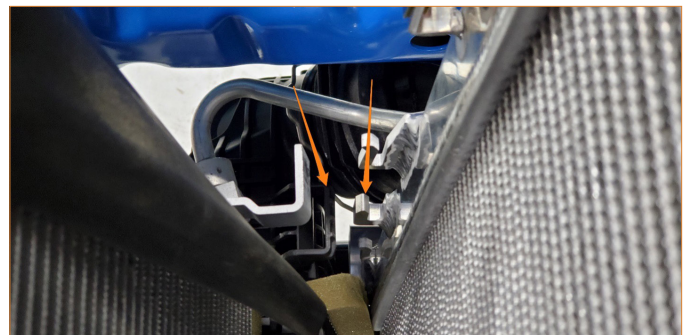
- 15.** Remove the radiator from the vehicle by lifting it straight up. If the rubber grommets remained attached to the lower mounting pegs on the radiator, remove them and reinstall them into the vehicle's frame.



- 16.** Lower the Mishimoto radiator into the vehicle and insert the lower mounting pegs into the rubber grommets.

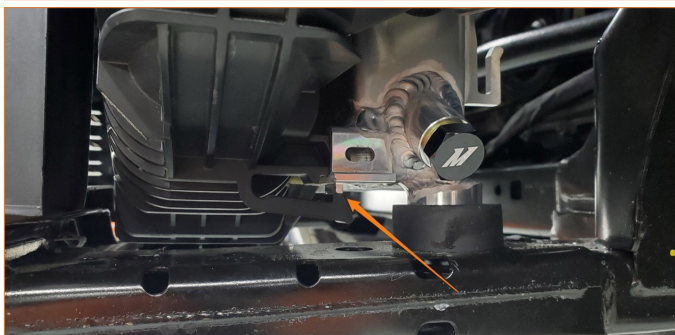
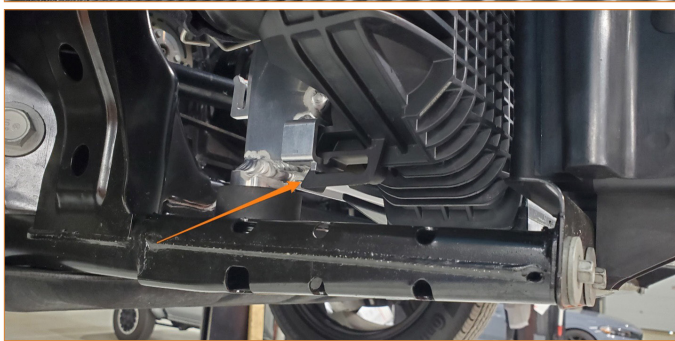
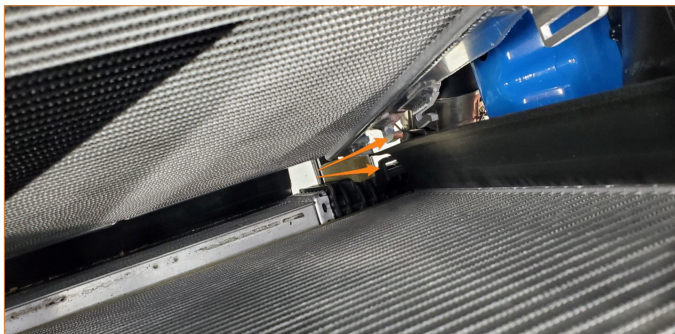


- 17.** This step only applies to 2.3L vehicles. For V8 vehicles, skip to Step 18. Attach the upper mounts on the intercooler onto the hooks on the radiator. Then, push the lower intercooler mounts into the mounts on the radiator to engage the plastic clips.



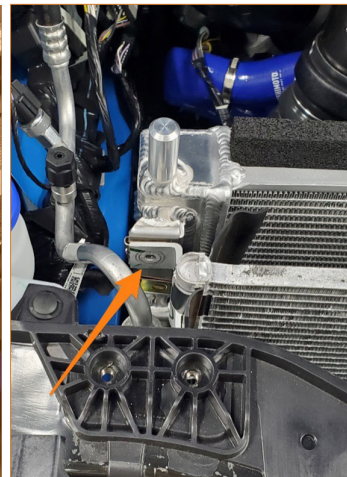
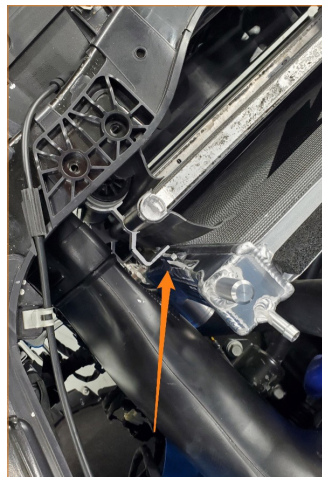
Continued on next page





**18.** Place the tabs on the A/C condenser into the hooks on the radiator. Then, using a 10mm socket, secure the A/C condenser to the radiator with one (1) of the supplied M6 washers and bolts.

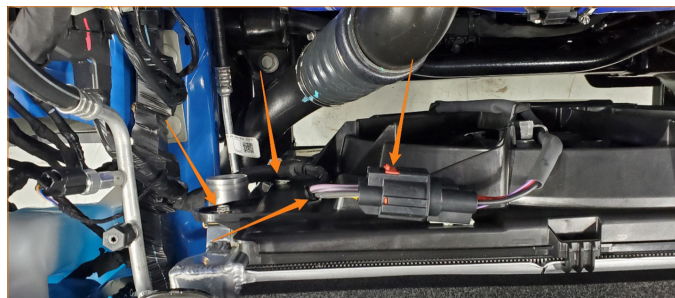
**Note:** A 2.3L vehicle is shown in the photos below. The A/C condenser on V8 vehicles will mount the same way but use different mount locations on the radiator. Depending on the vehicle trim level and options, additional coolers may be present. If so, install them the same way as the A/C condenser using the remaining supplied M6 washers and bolts.



**19.** Reinstall the stock fan shroud by inserting the tabs on the bottom of the fan shroud into the hooks on the back of the radiator. Then, reinstall the stock radiator mounts onto the upper mounting pegs on the Mishimoto radiator and, using a 10mm socket, secure them with the four (4) bolts that were removed in Step 7.



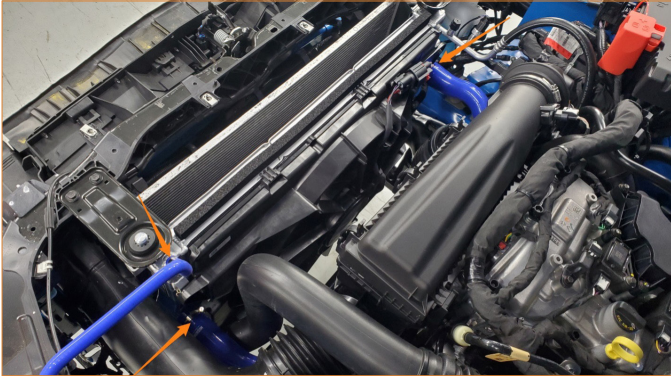
**20.** Using a 10mm socket, secure the fan shroud to the Mishimoto radiator using two (2) of the supplied M6 washers and bolts. Then, reconnect the fan plug, engage the locking tab, and insert the two tree clips into the holes on the fan shroud to secure the wiring harness.



Continued on next page



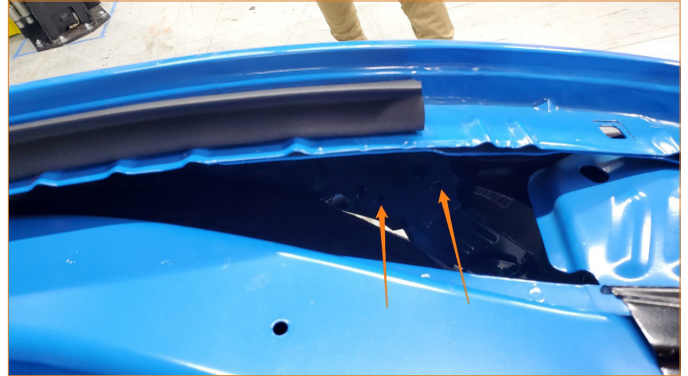
**21.** Connect the radiator inlet, outlet, and overflow hoses to the Mishimoto radiator and secure them with the stock hose clamps.



**22.** Steps 22-25 only apply to 2.3L vehicles. For V8 vehicles, skip to Step 26. Position the bumper back onto the vehicle and reconnect all wiring connections that were disconnected in Step 12. Attach the bumper bracket to the bumper with the tree clip that was removed in Step 11 on both sides of the vehicle. Then, insert the tree clip into the hole in the fender to hold the bumper in place.



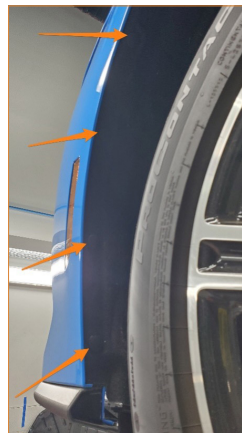
**23.** Using a 10mm socket, reinstall the four (4) bolts that were removed in Step 11 – two (2) on each side of the vehicle.



**24.** Using a 10mm socket, reinstall the six (6) bolts that were removed from the bumper in Step 9.

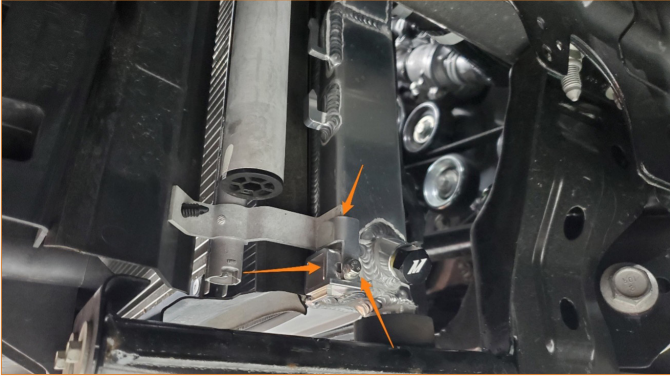


**25.** Attach the wheel liner to the bumper on both sides of the vehicle with the eight (8) pop clips that were removed in Step 10.



Continued on next page

**26.** This step only applies to V8 vehicles. For 2.3L vehicles skip to Step 27. Secure the lower tab on the A/C condenser by using an 8mm socket to install the two (2) supplied brackets with the one (1) supplied M5 bolt as shown below.



**27.** Using a 7mm socket, reinstall the engine splash guard using the twenty (20) bolts and three (3) pop clips that were removed in Step 1.



**28.** Reinstall the radiator cover using the eight (8) pop clips that were removed in Step 3.



**29.** Follow Ford's instructions for refilling and bleeding the cooling system. Refer to the vehicle owner's manual for more information.

The installation is now complete.

Continued on next page



## DISPOSAL INSTRUCTIONS

- › Do not dispose of any product as unsorted municipal waste. Use separate collection facilities. Contact your local authority for information regarding the collection systems available.
- › Never improperly dispose of any coolant, oil, or other chemicals

## WARRANTY INFORMATION



- › All claims must be accompanied with a picture of the Mishimoto product showing the issue for which the claim is being submitted.
- › Mishimoto asks that the customer inspect their purchased item for any damage immediately upon arrival.
- › Any product deemed dead on arrival (DOA) must be claimed within 14 business days of delivery. Claims outside of this time frame will not be covered under the Mishimoto Lifetime Warranty.
- › This warranty does not include payment and/or reimbursement of the cost of labor in connection with the removal of any product returned pursuant to the warranty policy or in connection with the installation of any replacement items provided under the warranty policy.
- › Mishimoto has the right to refuse a claim at any time.

- › When Mishimoto accepts a claim, Mishimoto retains full discretion to choose if it will: (i) repair or replace purchaser's original Mishimoto product; (ii) replace purchaser's original Mishimoto product with the most current available model; or (iii) provide the purchaser with a gift card redeemable on **Mishimoto.com** in the amount of the original purchase price of the original Mishimoto product. The provision of a replacement of a Mishimoto product is subject to availability and Borne Off-Road retains the right to substitute any warranty claim item with a comparable item or credit at any time.
- › If Mishimoto determines that it will provide a replacement item in connection with a claim under this warranty policy, and such item is out of stock, Mishimoto will place the customer on backorder and ship the replacement product to the purchaser once it becomes available.
- › Mishimoto is not liable for incorrect shipments in connection with a claim if a claim form is completed incorrectly, or if a model number is not included in a claim.
- › If you have a vehicle equipped with an automatic transmission, please make sure to specify this within the text box on the claim form. Mishimoto is not responsible for incorrect replacement shipments if transmission type is not indicated.



**WARNING**  
Cancer and  
Reproductive Harm  
[www.P65Warnings.ca.gov](http://www.P65Warnings.ca.gov)

- › This product can expose you to chemicals which are known to the state of California to cause cancer. For more information visit:  
[www.p65warnings.ca.gov](http://www.p65warnings.ca.gov)