



# INSTALLATION GUIDE

Oil Cooler Skid Plate Fits 2015-2020 BMW F8X M3/M4  
SKU: MMSD-F80-15

## TABLE OF CONTENTS

1. RESOURCES & CONTACT INFO
2. IMPORTANT SAFETY INFORMATION  
INSTALL TIME & DIFFICULTY  
REQUIRED TOOLS
5. DISPOSAL & WARRANTY INFORMATION

## RESOURCES & CONTACT



**CALL 1.877.466.4744**

CUSTOMER SERVICE HOURS: MON-FRI 8:30AM-5:00PM EST



**@MISHIMOTO**



**@GOMISHIMOTO**



**MISHIMOTO**



**@MISHIMOTO**



**ENGINEERING BLOG**

[WWW.MISHIMOTO.COM/ENGINEERING](http://WWW.MISHIMOTO.COM/ENGINEERING)

### IMPORTANT SAFETY INFORMATION

- › Mishimoto recommends you use safety glasses and protective gloves during the installation of our products
- › Raise vehicle only on jack stands or on a vehicle lift
- › Allow vehicle to cool completely prior to attempting installation
- › Do not run the engine or drive the vehicle while overheating; serious damage can occur
- › Please dispose of any liquids properly
- › Mishimoto is not responsible for any vehicle damage or personal injury due to installation errors, misuse, or removal of Mishimoto products
- › If you need any assistance while installing our products, reach out to our Customer Service Team at 1-877-GOMISHI

### REQUIRED TOOLS

1/4" DRIVE RATCHETING  
WRENCH

1/4" DRIVE 8MM SOCKET

1/4" DRIVE 10MM SOCKET

1/4" DRIVE 13MM SOCKET

-PICK TOOL

**INSTALL TIME: .5 HOURS**

**INSTALL DIFFICULTY:**     

### INSTALLATION NOTES:

The diffuser assembly is designed to create a low-pressure area underneath the oil cooler to help aid airflow through the oil cooler. The diffuser assembly was designed to be removed in case of damage or for those who are worried about ground clearance. Replacement diffuser assemblies can be purchased through Mishimoto.

### INSTALLATION INSTRUCTIONS

1. Raise the vehicle on a vehicle lift or jack stands to access the underside of the front of the vehicle. Never go under a vehicle that is only supported by a floor jack.
2. Remove the 7x 8mm screws holding up the side undertray and remove it from the vehicle. Repeat on the other side.



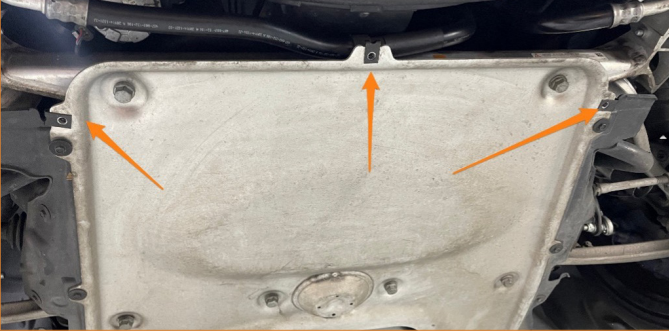
3. Remove the 7x 8mm screws and 2x 13mm bolts holding the factory oil cooler skid plate to the vehicle and remove the skid plate from the vehicle.



Continued on next page



4. Remove the 3x screw clips on the aluminum undertray and replace them with the included M6 nut clips, as shown.



5. Remove 6x screw clips from the factory oil cooler skid plate and install them in the locations shown.



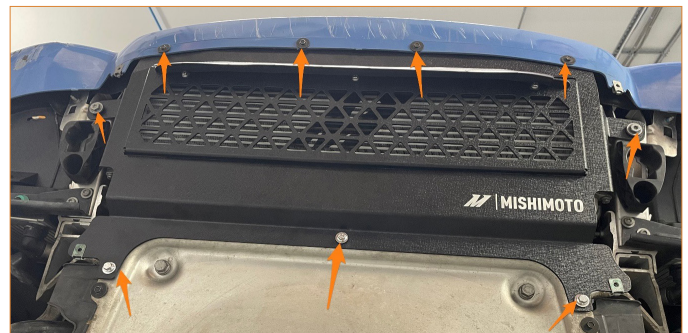
6. (Optional, recommended) Install the diffuser panel onto the skid plate with the 3X included M5 bolts.



7. Install the weather stripping onto the diffuser as shown, making sure that the weather stripping is centered on the diffuser. It may be necessary to push down on the weather stripping with force for it to be fully seated. Alternatively, use a flathead screwdriver to open up the channel in the weather stripping for an easier installation. If a screwdriver is used to open up the channel, use pliers or similar to clamp the weatherstripping onto the diffuser afterward.

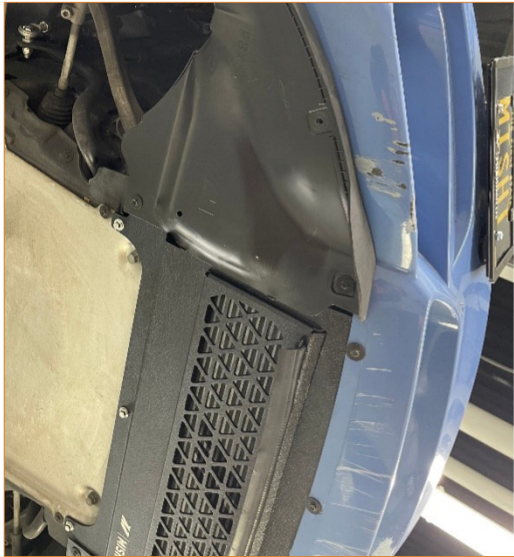


8. Install the skid plate onto the vehicle. Start by loosely installing the 2x 13mm bolts on each side to hold up the skid plate. Then loosely install the 3X M6 bolts and washers on the back three bolt holes. Last, install the 4x 8mm screws holding the front of the skid plate to the bumper as shown. Then, make sure that the skid plate is straight and centered and tighten the 13mm bolts and 10mm M6 bolts that secure the skid plate to the vehicle. Make sure that no metal part of the skid plate is in contact with the oil cooler. Adjust if necessary.



Continued on next page

9. Reinstall the side undertrays on the vehicle with 7x 8mm screws per side.



Continued on next page

## DISPOSAL INSTRUCTIONS

- › Do not dispose of any product as unsorted municipal waste. Use separate collection facilities. Contact your local authority for information regarding the collection systems available.
- › Never improperly dispose of any coolant, oil, or other chemicals

## WARRANTY INFORMATION



- › All claims must be accompanied with a picture of the Mishimoto product showing the issue for which the claim is being submitted.
- › Mishimoto asks that the customer inspect their purchased item for any damage immediately upon arrival.
- › Any product deemed dead on arrival (DOA) must be claimed within 14 business days of delivery. Claims outside of this time frame will not be covered under the Mishimoto Lifetime Warranty.
- › This warranty does not include payment and/or reimbursement of the cost of labor in connection with the removal of any product returned pursuant to the warranty policy or in connection with the installation of any replacement items provided under the warranty policy.
- › Mishimoto has the right to refuse a claim at any time.

- › When Mishimoto accepts a claim, Mishimoto retains full discretion to choose if it will: (i) repair or replace purchaser's original Mishimoto product; (ii) replace purchaser's original Mishimoto product with the most current available model; or (iii) provide the purchaser with a gift card redeemable on **Mishimoto.com** in the amount of the original purchase price of the original Mishimoto product. The provision of a replacement of a Mishimoto product is subject to availability and Borne Off-Road retains the right to substitute any warranty claim item with a comparable item or credit at any time.
- › If Mishimoto determines that it will provide a replacement item in connection with a claim under this warranty policy, and such item is out of stock, Mishimoto will place the customer on backorder and ship the replacement product to the purchaser once it becomes available.
- › Mishimoto is not liable for incorrect shipments in connection with a claim if a claim form is completed incorrectly, or if a model number is not included in a claim.
- › If you have a vehicle equipped with an automatic transmission, please make sure to specify this within the text box on the claim form. Mishimoto is not responsible for incorrect replacement shipments if transmission type is not indicated.



**WARNING**  
Cancer and  
Reproductive Harm  
[www.P65Warnings.ca.gov](http://www.P65Warnings.ca.gov)

- › This product can expose you to chemicals which are known to the state of California to cause cancer. For more information visit:  
[www.p65warnings.ca.gov](http://www.p65warnings.ca.gov)